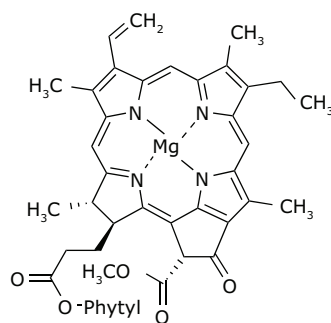
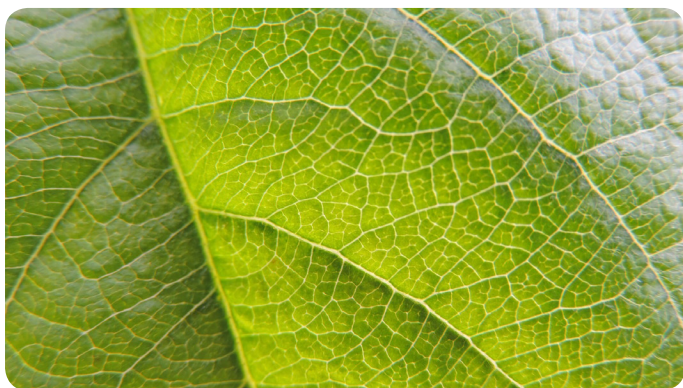


FOOD & BEVERAGE

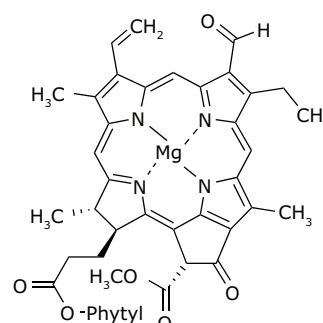
Chlorophyll a and b

New Analytical Standards for Natural Pigments

Matthias Nold, Product Manager, Reference Materials, matthias.nold@sial.com



Chlorophyll a 00538



Chlorophyll b 00538

The compounds of the chlorophyll family are natural pigments that are essential for photosynthesis and responsible for the green color of plants and algae. The chlorophylls are all structurally very closely related, containing a porphyrine or chlorin ring with magnesium and, in the case of chlorophyll a and b, a long phytol chain.

Chlorophyll is also applied as a food colorant (E140).

For the complete offering of our analytical standards for carotenoids and other natural pigments, please visit SigmaAldrich.com/carotenoids

Description	Package Size	Cat. No.
Chlorophyll a	1 mg	96145
Chlorophyll b	1 mg	00538

Millipore
Filtration, Separation
& Preparation

Enjoy the Quality of Millex® Filters

SKIP THE PAIN

Introducing the Smplicity® G2 Filtration System:
The better way to use Millex® filters.

Merckmillipore.com/smplicity

